

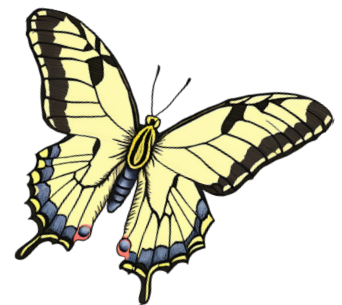
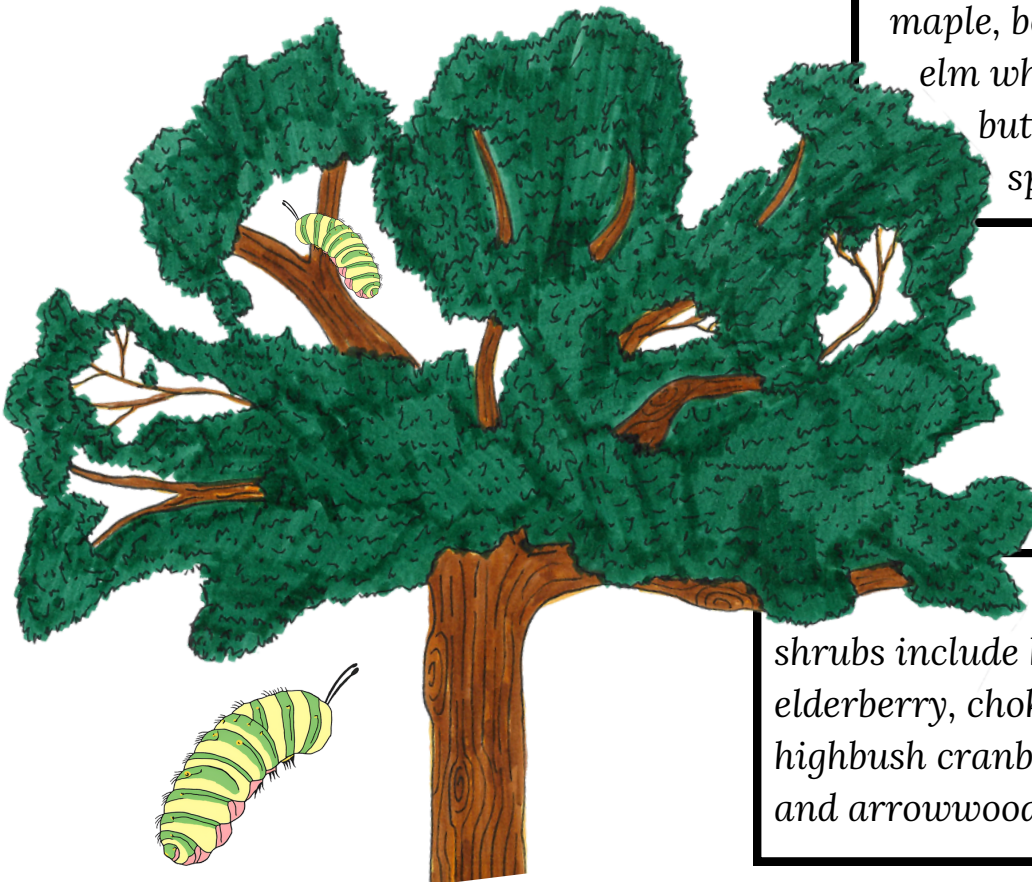
Trees and Shrubs for Pollinators

Pollinators are essential in Iowa's environmental and agricultural systems, for both biodiversity and crop production. With pollinator populations declining, trees and shrubs play a critical role in the life cycle of these species. Many tree and shrub species are key to quality pollinator habitat and provide food and nectar.

Trees like oaks often provide the habitat needed for reproduction of threatened pollinator species like butterflies and moths. Oaks support at least 534 species of butterflies and moths. They are also incredible habitats for birds!



Other important tree species include willow, cherry, plum, maple, box elder, hickory and elm which support over 400 butterfly and moth species.



Important native shrubs include hawthorn, redbud, elderberry, chokecherry, plum, highbush cranberry, serviceberry, and arrowwood.