

CAMPUS TRASH AUDIT

By: Yusef Abuissa, Delaney Albrecht, Jordan Barnett, Cole Billings, and
Sydney Bortscheller

METHODOLOGIES

We traveled to three locations and asked for a bag each of recycling and trash to be set aside after collection

We then weighed the misplaced materials in each bag



44.8lbs

2.9lbs



MOTIVATION

Since there are so many students on campus using the trash, changing trash habits here can have a big impact

Misplaced trash is a big deal

Really simple and easy to correct our mistakes

It's apparent people don't properly recycle

**RECYCLE
LIKE A HAWK**

recycle.uiowa.edu

ALL RECYCLABLES MUST BE CLEAN AND EMPTY

Plastic Containers Cartons Metal Containers Cardboard Paper Products

THANK YOU FOR RECYCLING!

The graphic features a hawk mascot in a recycling symbol, a list of recyclable items with photos, and a thank you message at the bottom.

FINDINGS

In our audit, we sorted through 44.6 pounds of designated garbage and 26.0 pounds of designated recycling.

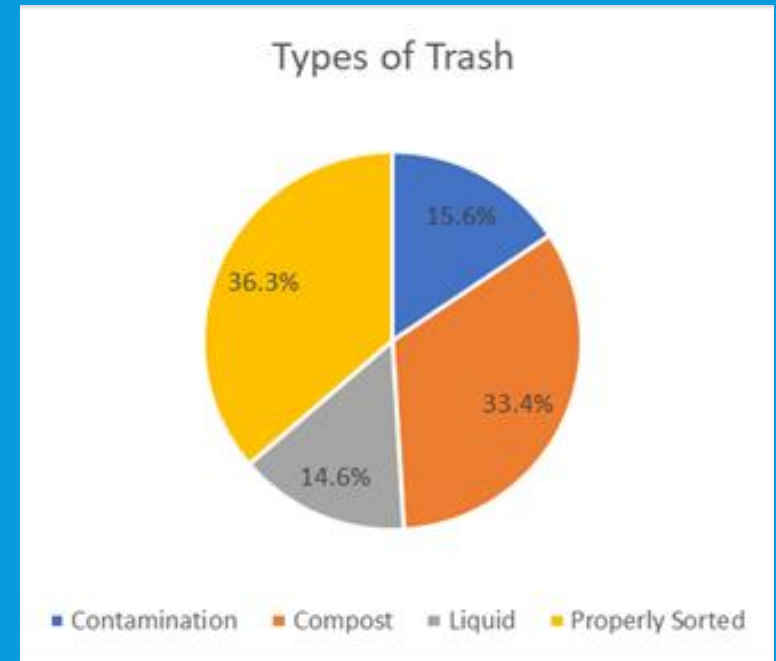
We removing and weighed anything that didn't belong and calculated the % that was misplaced.

In the end

- 6.5% of the material in the trash by weight was recyclable

- 30.4% of the material in the recycling bins was actually trash.

There was a lot of compostable material, but compost is very easily contaminated so compost collection would be tricky.



ONLINE PAMPHLET FOR MORE DETAILS

