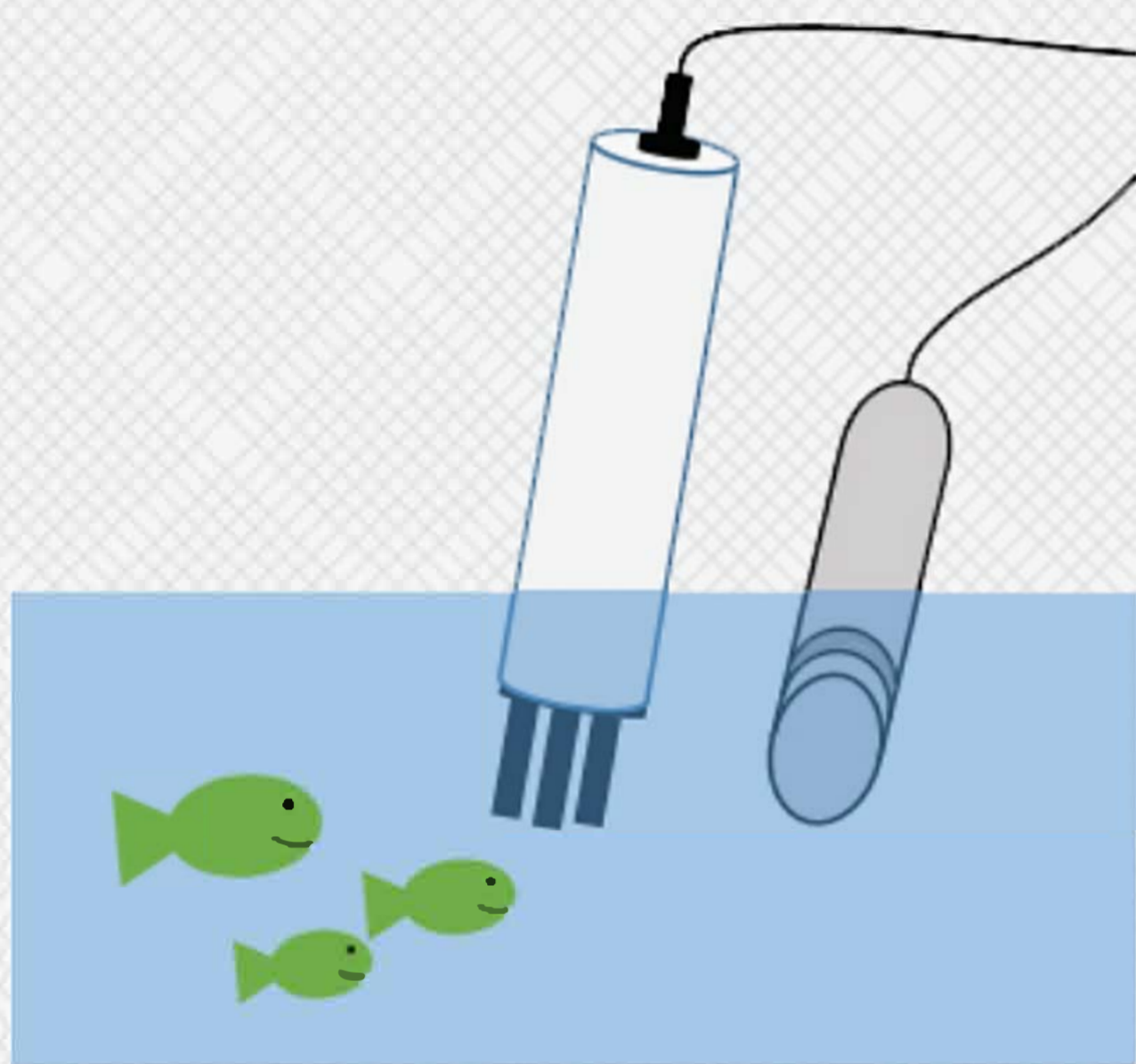


Our new system collects data at high spatial resolution to better target nutrient reduction efforts.

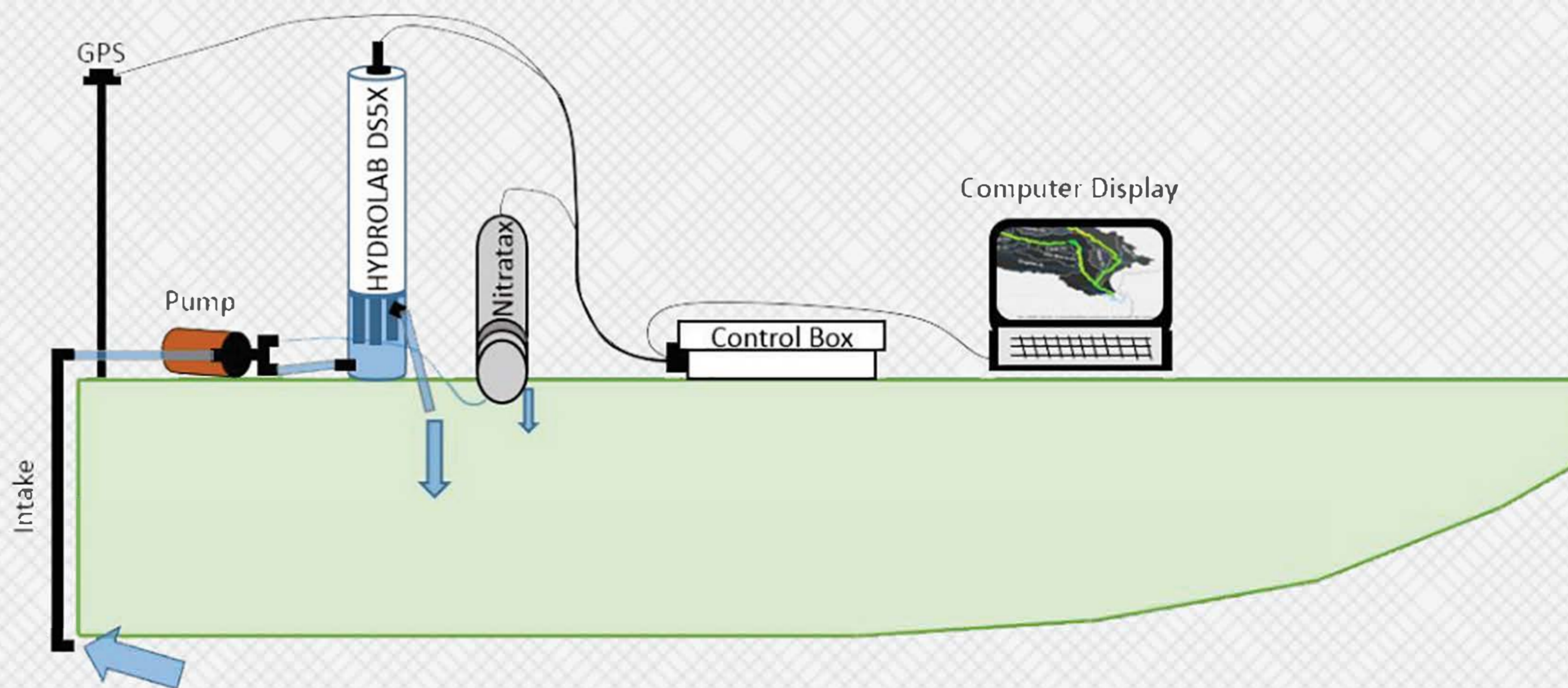


## Current Sensors

Water quality sensors currently measure data at one location at high temporal resolution. High cost prevents dense deployment of these sensors.

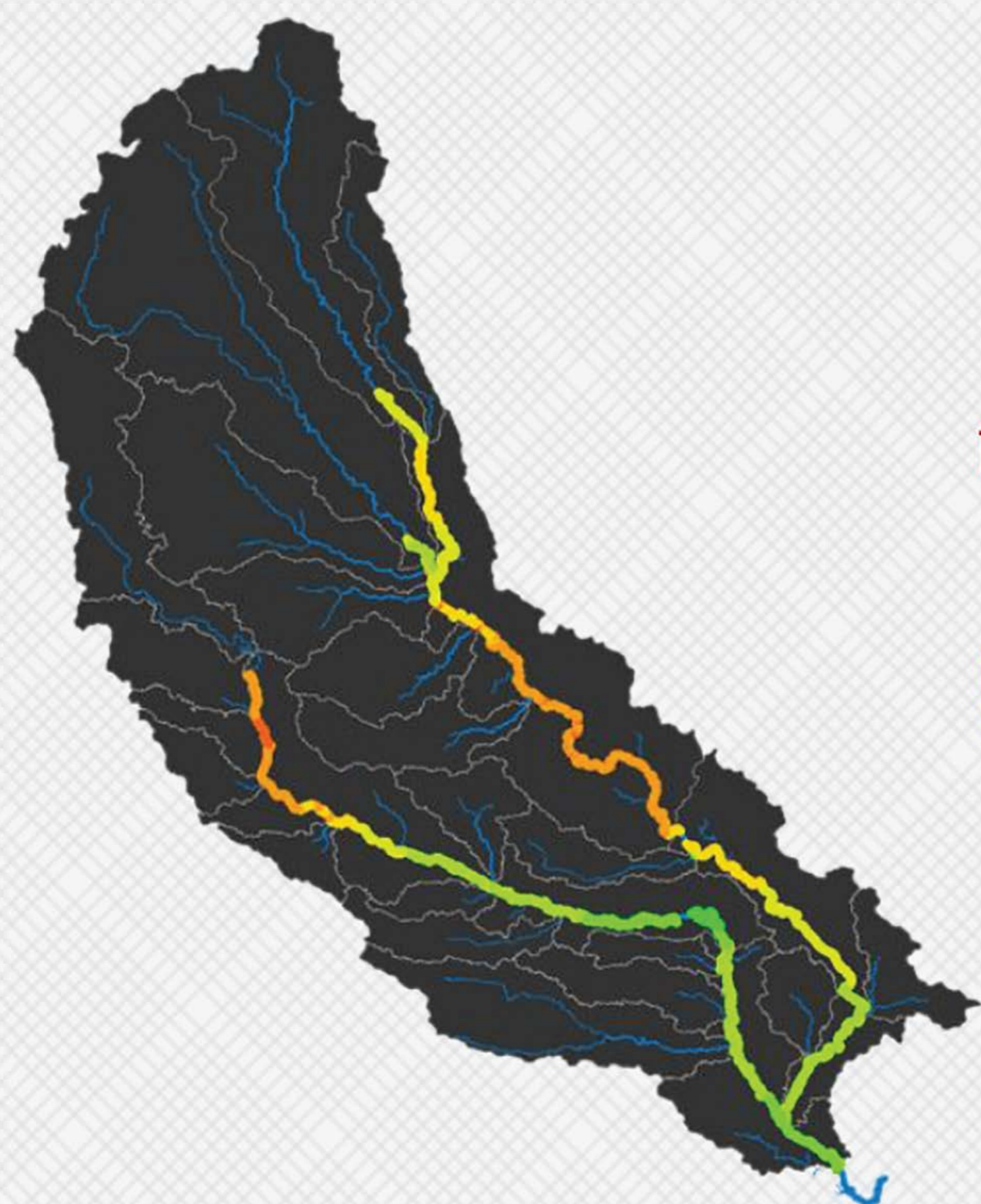
## New Boat-Deployed Sensors

Boat-deployed sensors allow rapid collection of data at high spatial resolutions.

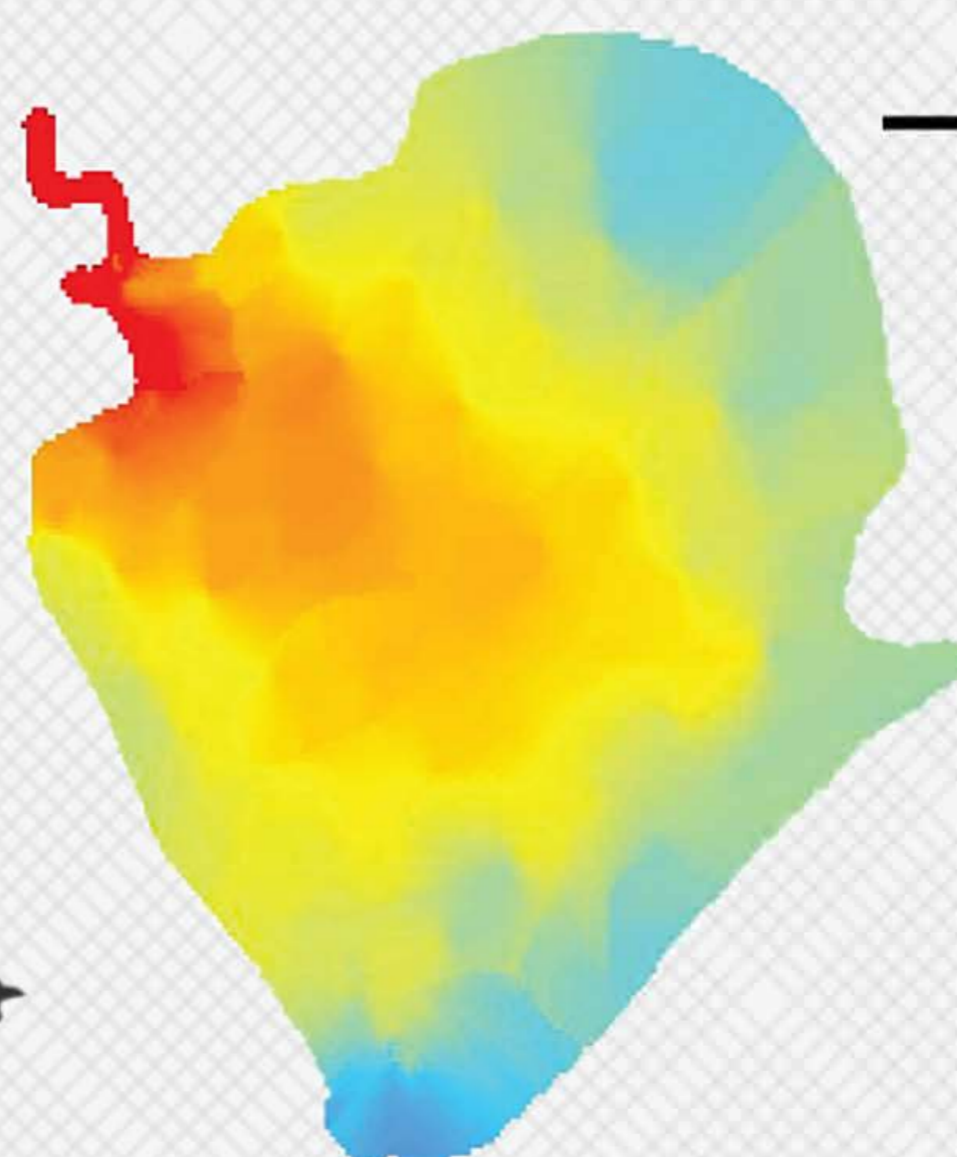


## New Research Pathways

We can study lakes and rivers at higher spatial resolution than ever before. High spatial resolution data allows us to identify pollutant sources in a study area of interest.



Rivers/Watersheds



Lakes